

ASPECT™

CABINETS

Built with a Better Perspective™








PRODUCT BROCHURE 2022
FINISHES / CONSTRUCTION / GALLERY



HANOVER
surf • american poplar

cover:
door style • aspen
finish • ice cap

TABLE OF CONTENTS

	GALLERY	02
	DRAWER & DOOR STYLE OPTIONS	09
	STAIN FINISHES	12
	PAINT FINISHES	14
	CABINET CONSTRUCTION	17



ASPEN
ice cap • paint



BEADED CENTURY
tundra • paint



SQUARE RAISED
kona • maple



SQUARE RAISED
tundra • paint
indigo • american poplar



HANOVER
agreeable gray • paint



HANOVER
indigo • american poplar



SQUARE FLAT
smoke • maple



ASPEN
shadow • american poplar



LANCASTER
praline • maple
tundra • paint



DRAWER FRONT OPTIONS

Aspect door styles are available in American Poplar, Maple, Oak or Painted finishes and as traditional or full overlay. Door styles are available with a traditional slab style drawer front with matching door edge profiles, shaped slab drawer fronts or matching five-piece drawer fronts. The Sculpted, Square Raised and Oxford Panel shaped drawer fronts feature a more decorative profile that will not match the door edge profiles exactly. For an appearance similar to the door style, choose the matching five-piece drawer front with matching edge profile.

Square Raised
w/Square Raised
Shaped Front

Landes
w/Matching
Front

Aspen
w/Sculpted
Shaped Front

Oxford
w/Oxford
Shaped Front

Lancaster
w/Slab
Front



VISIT US ONLINE

Go to aspectcabinetry.com to view our complete photo gallery featuring Aspect Cabinetry. You can also explore our large selection of finishes, learn about the construction of our cabinets, and find out where to buy Aspect. All of this and more is just a click away.



DOOR STYLE OPTIONS



Arch Flat
white rock
american poplar



Arch Raised
autumn
red oak



Asherville
dover white w/latte highlight



Aspen
smoke
maple



Aspen w/Sculpted DF
praline
maple



Crown Flat
surf
american poplar



Crown Raised
ginger
maple



Essex
kona
maple



Heritage
bayou
american poplar



Heritage w/Slab DF
gravelstone
red oak



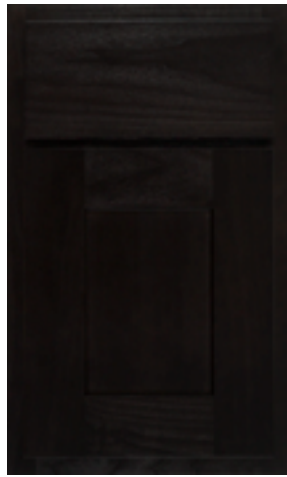
Hanover w/Slab DF
sandstone
maple



Hanover
dorian gray



DOOR STYLE OPTIONS



Lancaster w/Slab DF
mink
american poplar



Lancaster
indigo
american poplar



Landes
olympus white



Metropolitan
castlegate
american poplar



Oxford w/Oxford Shaped DF
urban
red oak



Oxford
tundra



Pioneer
sedona w/black glaze
maple



Square Flat w/Slab DF
dark azure
red oak



Square Flat
chocolate
american poplar



Square Raised
hazel w/black glaze
american poplar



Square Raised w/Square
Shaped DF
dover

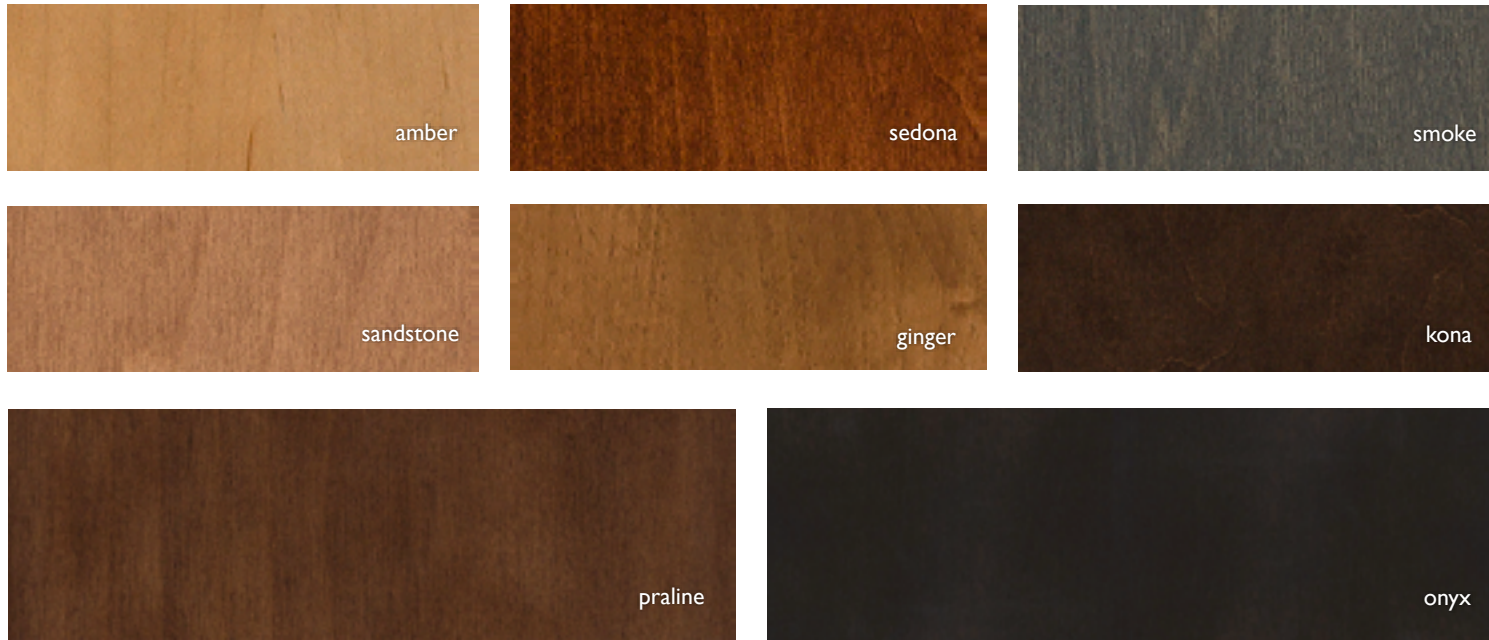


METROPOLITAN
midnight • red oak

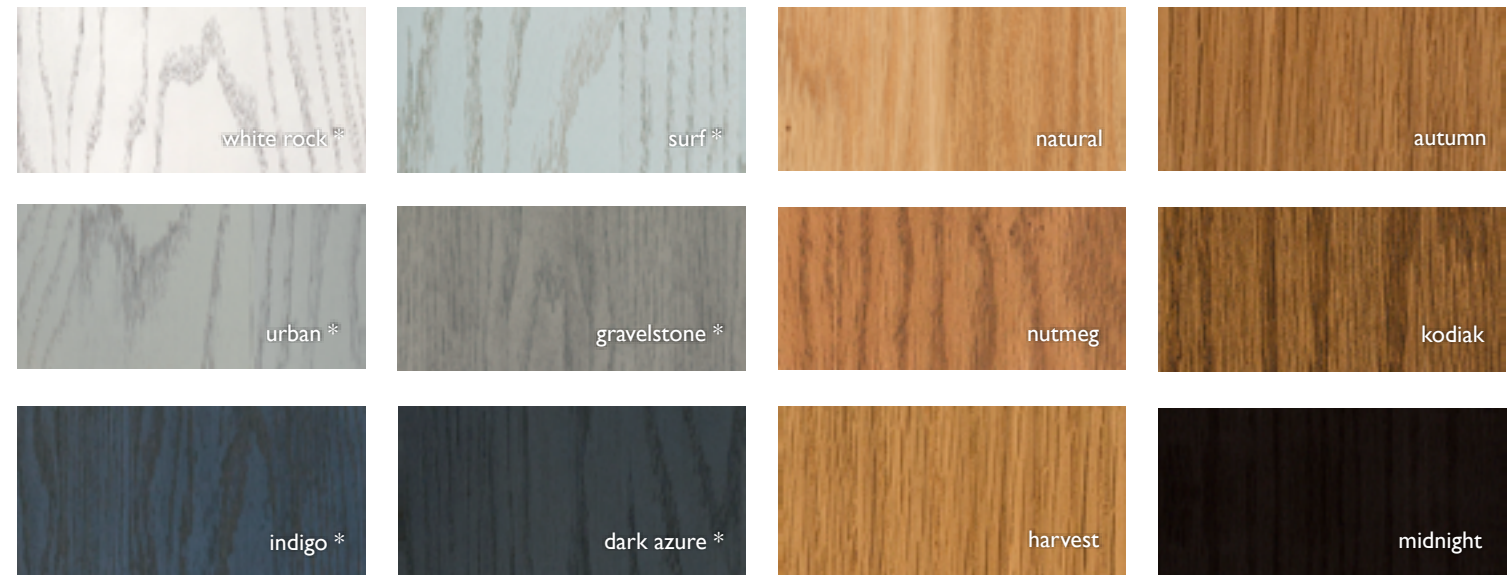


STAIN FINISHES

MAPLE



RED OAK

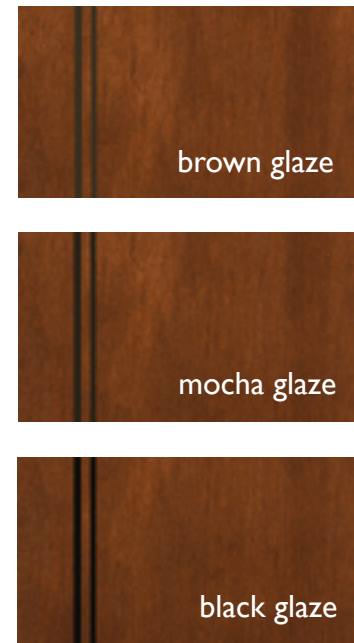


AMERICAN POPLAR



GLAZES ON STAIN

Aspect Cabinetry is available with three glaze colors on most finishes in Oak, American Poplar and Maple. All of the glazes are available on any of Aspect's door styles. Glaze will be left in profiles of doors, drawer fronts, and some mouldings where glaze hang-up is possible. Glaze will appear differently or not at all, depending on the style and edge profiles. Please see an actual sample before making your final selection.

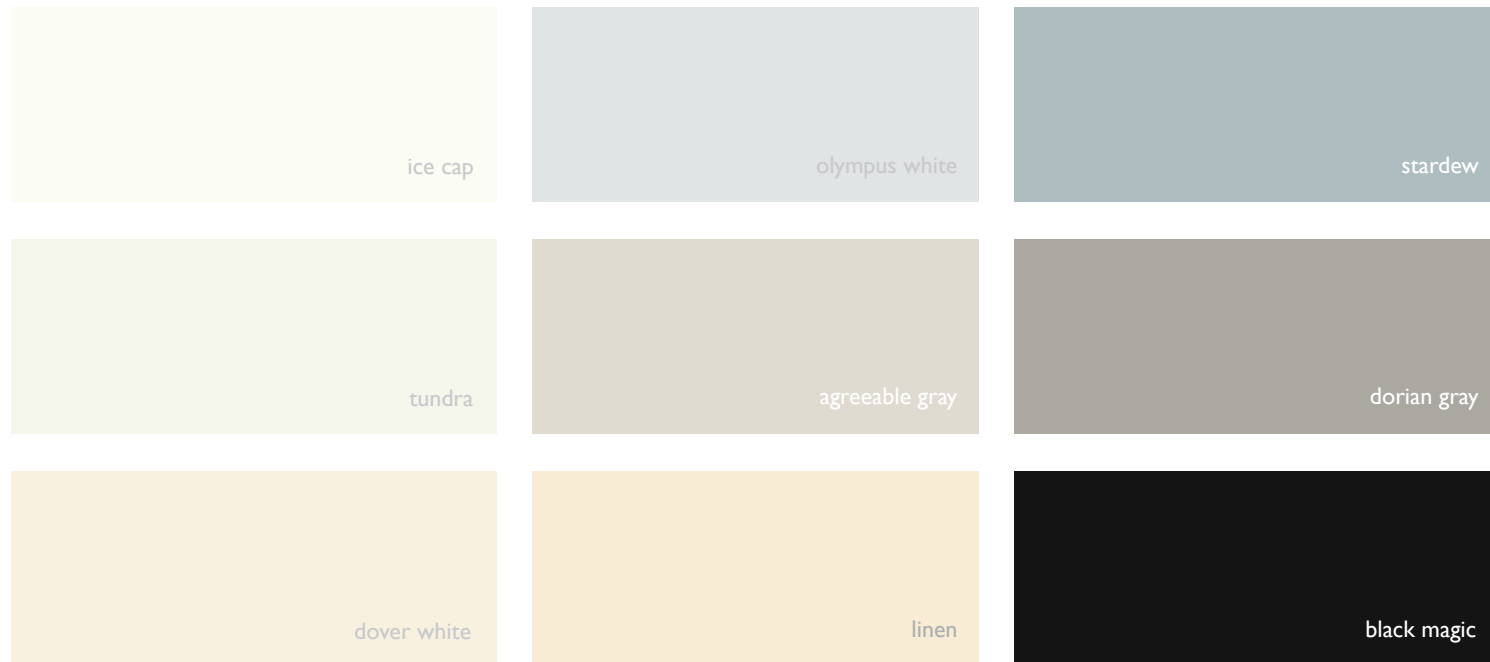




PAINT FINISHES

PAINT COLORS

Painted cabinetry is timeless. With Aspect Cabinetry you will have a look that will last for years to come. Choose from our collection of paint colors, with or without a glaze or highlight. Painted finishes are available only on maple* wood species.



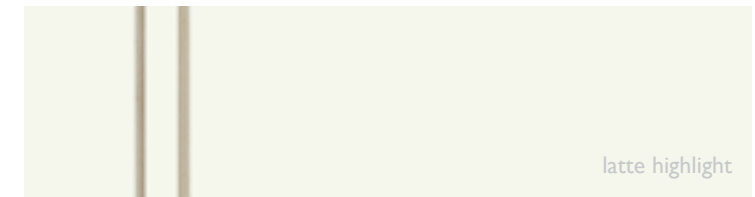
GLAZES ON PAINT

Mix and match one of our three glaze colors with the paint color of your choice for just the right look. Glaze will be left in profiles of doors, drawer fronts and mouldings where glaze hang-up is possible. Glaze will appear differently or not at all, depending on the style and edge profiles chosen. Please see an actual sample before making your final selection. Black Magic paint color is not available with glazes.



HIGHLIGHT

Our Latte Highlight is a more subtle glazing technique for just the right amount of antiquing to our selection of paint colors. Highlight material will be left in profiles of doors, drawer fronts, and mouldings where glaze hang-up is possible. The Latte Highlight will appear differently or not at all, depending on the style and edge profiles chosen. Please see an actual sample before making your final selection. Black Magic paint color is not available with Latte Highlight.



*painted maple will be maple or other tight grained hardwoods with characteristics similar to maple

KITCHEN CABINET COMPANIES AREN'T ALL THE SAME. MAKE SURE YOU PICK ONE THAT HAS A POSITIVE IMPACT ON THE ENVIRONMENT.

A recent study by Hanley-Wood found that environmental sustainability is one of the top reasons cited when selecting cabinets



KITCHEN CABINET MANUFACTURERS ASSOCIATION, ENVIRONMENTAL STEWARDSHIP PROGRAM (ESP). ALL PRODUCTS IMPACT THE ENVIRONMENT FOR ESP PROGRAM CRITERIA. VISIT KCMA.ORG

RESPONSIBLE PROCESS RESOURCE MANAGEMENT:

Cabinet manufacturers are checked to ensure they are dealing with wastes in responsible, sustainable ways and that they have a comprehensive recycling program in place.



ENVIRONMENTAL STEWARDSHIP:

Cabinet manufacturers are checked to ensure they have a written policy stating their commitment to environmental quality and that they attempt to ensure their vendors also engage in environmentally sustainable practices.



COMMUNITY ENGAGEMENT:

Cabinet manufacturers are examined to ensure they demonstrate community involvement and observe all federal, state and local environmental regulations.

To earn the KCMA Environmental Stewardship Program Certification Seal, companies need to score 80 out of a possible 110 points in these categories:

SUSTAINABLE PRODUCT RESOURCE MANAGEMENT:

Cabinet manufacturers are investigated to ensure they are purchasing materials from reputable companies with sustainable forestry programs.



AIR QUALITY:

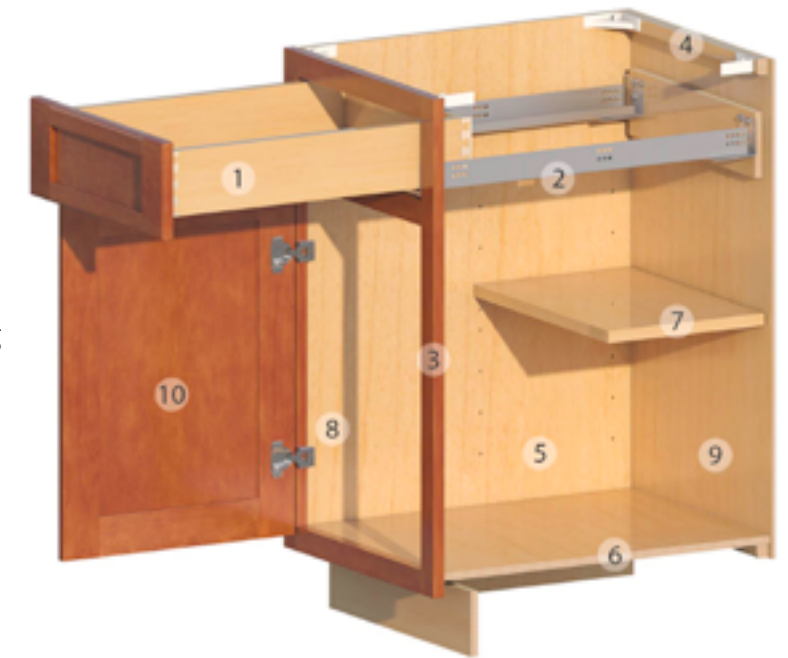
Cabinets are inspected to ensure they meet safe emission standards for formaldehyde and other hazardous air pollutant levels.

CABINET CONSTRUCTION

Aspect Cabinetry provides built-to-order cabinetry, just for you, with a large selection of cabinet types and sizes. With custom height, depth, and width modifications, Aspect Cabinetry provides the flexibility to meet your individual design needs. You can have affordable cabinets for your entire home without sacrificing quality. The list below outlines our quality construction methods.

CONSTRUCTION METHODS

1. 5/8" hardwood dovetail drawer box
2. Guides are Blum TANDEM edge BLUMOTION 7/8" extension with integrated soft closing mechanism
3. 1 1/2" wide solid wood face frames
4. Solid wood hanging rails for sturdy installation
5. 1/2" cabinet sides (1/4" matching ends applied to 1/2" cabinet sides when finished)
6. 1/2" tops and bottoms on wall cabinets and 1/2" bottoms on base cabinets
7. 3/4" thick shelves
8. Blum COMPACT BLUMOTION 6-way adjustable hinges with integrated soft closing mechanism
9. Interior is laminated in an attractive natural maple pattern
10. Catalyzed, conversion varnish top coat protects the cabinetry for years to come



For more information, visit www.kcma.org.

ASPECT
CABINETRY

back cover:
door style • metropolitan
finish • ice cap paint
*range hood not available

ASPECT™

CABINETS

aspectcabinetry.com



KITCHEN CABINET MANUFACTURERS ASSOCIATION
INTERNATIONAL'S SUSTAINABLE PROGRAM
ALL PRODUCTS MEET THE CRITERIA
FOR OUR PROGRAMS. VISIT WWW.KCMA.ORG

Manufactured by W. W. Wood Products, Inc.
A family owned company

Due to limitations in printing or changes in manufacturing, the finishes and products shown may not be accurately represented or are no longer available. Visit a retailer to view samples and confirm availability.



LIT-ASP 1/22